

# TOGETHER WE CAN GUATEMALA

## ASOCIACIÓN JUNTOS PODEMOS

ANNUAL REPORT

# 2024

# Mission

We are devoted to fostering thriving communities through integrated programs supporting education, environmental stewardship, and food sovereignty.

## Board

Sónya Waldthausen  
Jeniffer Pérez  
Claire Henkel  
Alexandra Orozco  
Salina Duncan  
Peter McManus  
Steve Cook

## Staff

David Santa Catalina  
*Executive Director*

Adriana Chacón  
*El Hato Literacy Center coordinator*

Jimena Shoc  
*Garden of Hope coordinator*

Leticia Por  
*Garden assistant*

Joseline Chan  
*El Hato Literacy Center assistant*





Together We Can Guatemala mainly supports Mayan children between the ages of 6 and 15 and Mayan mothers in Aldea El Hato, Sacatepéquez, through education programs and food sovereignty initiatives, empowering families with the knowledge and resources to build a more resilient future.

Hyperlink 

## CONTENTS

- |                                |                          |
|--------------------------------|--------------------------|
| p. 5 - President's letter      | p. 17 - Financial report |
| p. 8 - El Hato Literacy Center | p. 19 - A donor's story  |
| p. 10 - Garden of Hope         | p. 21 - Volunteering     |
| p. 12 - Impact                 | p. 22 - Gallery          |
| p. 14 - Sharing voices         | p. 25 - Partners         |
| p. 15 - Future                 | p. 26 - Follow us        |



# 2024





# Executive Director's letter

Dear Friends and Supporters,

As we reflect on 2024, we celebrate a year of growth, strengthened partnerships, and meaningful impact. Thanks to your unwavering support, we have expanded our presence in the sector, increasing visibility and securing two major partnerships: Kenoli Foundation and Chances for Children International, which will provide critical support for our Garden of Hope and El Hato Literacy Center, respectively. These new allies, alongside Thrive Philanthropy and Vegan Compassion Group, provide crucial stability for our programs.

Locally, our partnerships with El Hato's public schools continue to flourish. The secondary school formally recognized our contributions, and we now provide computer science education to all students. At the Literacy Center, we proudly celebrated our sixth graders' graduation, while the Garden of Hope launched a primary school garden, helping meet national requirements and reinforcing food sovereignty. We also made strides toward self-sustainability by successfully producing and harvesting our own seeds.

We would like to extend our heartfelt gratitude to Nancy Kuster for her valuable time and dedication to our Board of Directors. In 2024, Nancy stepped down, leaving a lasting impact on our work. At the same time, we warmly welcome Steve Cook to the board and thank him for joining our important cause. We look forward to the journey ahead together.

None of this would be possible without you. We extend our deepest gratitude to all our supporters, with special thanks to Thrive Philanthropy, Chances for Children International, and Vegan Compassion Group for their vital contributions. Together, we are transforming lives and building a brighter future.

With gratitude and hope,



**David Santa Catalina González**  
Executive Director







Together We Can Guatemala takes a holistic approach to community development, ensuring that our projects work together to create meaningful and lasting impact. Through our integrated initiatives, we provide comprehensive support that uplifts individuals and families, empowering them to build a stronger, more resilient future.

Nutrition



Education



Technology



Food  
Sovereignty



Humane  
Education



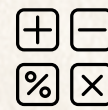
Leadership



Creativity







The El Hato Literacy Center is a safe and inspiring space where children and youth develop a love for learning. Through literacy programs, tutoring, and creative activities, we provide educational support tailored to the community's needs. Our structured programs foster critical thinking, reading comprehension, and academic confidence, empowering students to thrive in school and beyond.







# Garden of Hope



The Garden of Hope is a vibrant community space where children and families connect with nature, learn to grow their own food, and embrace sustainable living. Through hands-on gardening, nutrition education, and environmental stewardship, we empower participants to build food sovereignty, nurture their well-being, and cultivate a deeper respect for the world around them.









## El Hato Literacy Center

<i>Direct impact</i> <i>(students served)</i>	130
<i>Total impact</i>	402
<i>Passed to next grade</i> <i>(tutoring program)</i>	100%
<i>Technology hours</i>	183
<i>Humane Education hours</i>	42
<i>Vacation camp sessions</i>	20
<i>Provided meals</i>	531

## Garden of Hope

<i>Direct impact</i> <i>(People served)</i>	315
<i>Total impact</i>	980
<i>Cooking hours</i>	113
<i>Provided meals</i>	3360
<i>Harvest - pounds</i>	250
<i>Harvest - Bundles of vegetables</i>	79





## Impact

Around **77%** of parents from the tutoring program noted their children have more will to study after participating in our programs. A remarkable **100%** of our Garden to Kitchen participants stated that after completing the program, they have a better understanding of what is beneficial for both themselves and their families.

An impressive **100%** of our long-term beneficiaries believe that the tutoring program played a key role in helping them successfully complete their primary education and inspired them to continue their studies. Additionally, after completing a year in our Humane Education program, **98%** of students expressed that they feel upset when they witness mistreatment of another person, an animal, or nature.





# Sharing voices

"I feel that I have learned many things. I would recommend the program to others so that we can all learn the recipes that can be made with vegetables."

*Nora Sucely Reyes Subuyuj*

Regarding the Garden to Kitchen program



"The organization's work is very good; they teach us many things and are very kind. My daughter had a hard time with her studies, but with your help, she was able to make progress."

*María Saturnina Chavac*

Regarding Asociación Juntos Podemos



"I feel like I understand my assignments better now, and I feel good when I come here. I also feel comfortable with my classmates and the teacher."

*Josue Felipe Recopachi Por*

Regarding the Tutoring program





# Future



As we look ahead, we are refining and expanding our impact to better serve our community. At the **El Hato Literacy Center**, we are adopting a more selective approach to ensure deeper, more meaningful support for our beneficiaries. By focusing on students who demonstrate both need and commitment, we aim to enhance the quality of our educational programs and provide targeted resources that foster long-term academic success. Additionally, we are placing a greater emphasis on educational reinforcement and community engagement, ensuring that our students and their families are fully supported in their learning journeys.

Meanwhile, the **Garden of Hope** is set to flourish in new ways. Thanks to the generous support from our year-end fundraisers, we are enhancing our facilities and expanding our reach. Our vision includes a stronger emphasis on gardening, with family gardens at beneficiaries' homes, a thriving community garden, and a reinforced school garden program. To further support this, we are introducing a Seeds Library, where families and community members can access various seeds, fostering biodiversity and encouraging sustainable gardening practices. By strengthening food sovereignty initiatives, we will empower families with the knowledge and tools to cultivate their own nutrition, fostering both sustainability and resilience.





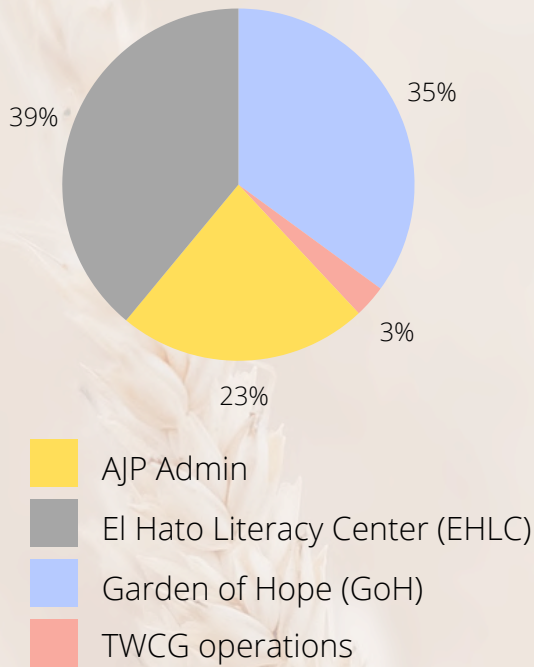




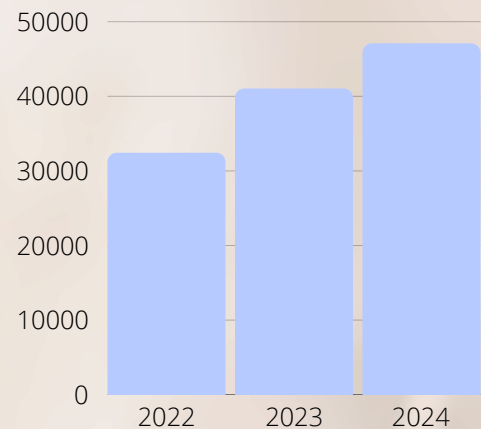
# Financial report

Expenses

\$47,100

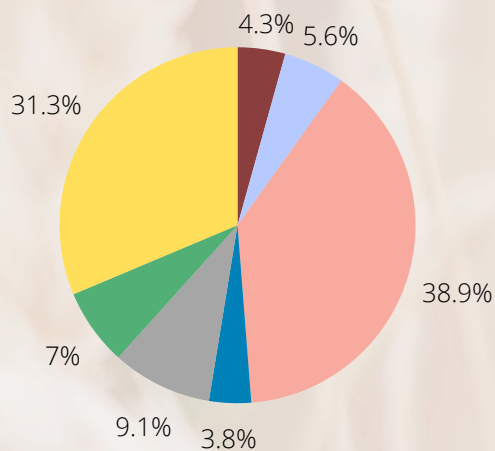


## Annual expenses



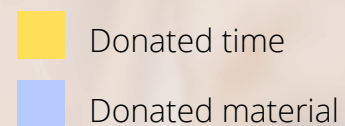
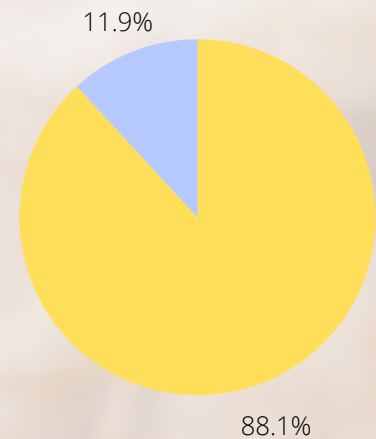
Revenue

\$51,500



\$32,900

In-kind









# A donor's story



**Gary Guttormsen's** connection to Guatemala began over 21 years ago, when he joined a team from Oregon working on health and stove projects in rural communities.

"A friend, whose son I had taught in high school, invited me to join the education team traveling to Santa Avelina in the Ixil Triangle of Quiché. That first trip changed my life. I fell in love with the people of Guatemala and returned every year until the pandemic interrupted travel. To this day, I continue to support a student from that first community, and my connection to Guatemala has only deepened over the years.

The more I learned about Guatemala's history, especially the genocide against Indigenous people, the more I realized how much work remains to rebuild and empower communities. Despite many great efforts, deep inequalities persist, and I believe supporting these causes is essential.

My relationship with Together We Can Guatemala began through personal connections. One of the highlights of my trips to Guatemala was studying Spanish at a school in Antigua, where Juanita became my teacher and dear friend. Over the years, I've had the joy of getting to know her daughters, and recently, I met her son-in-law, who now serves as the Executive Director of the organization.

*Continued on the next page*

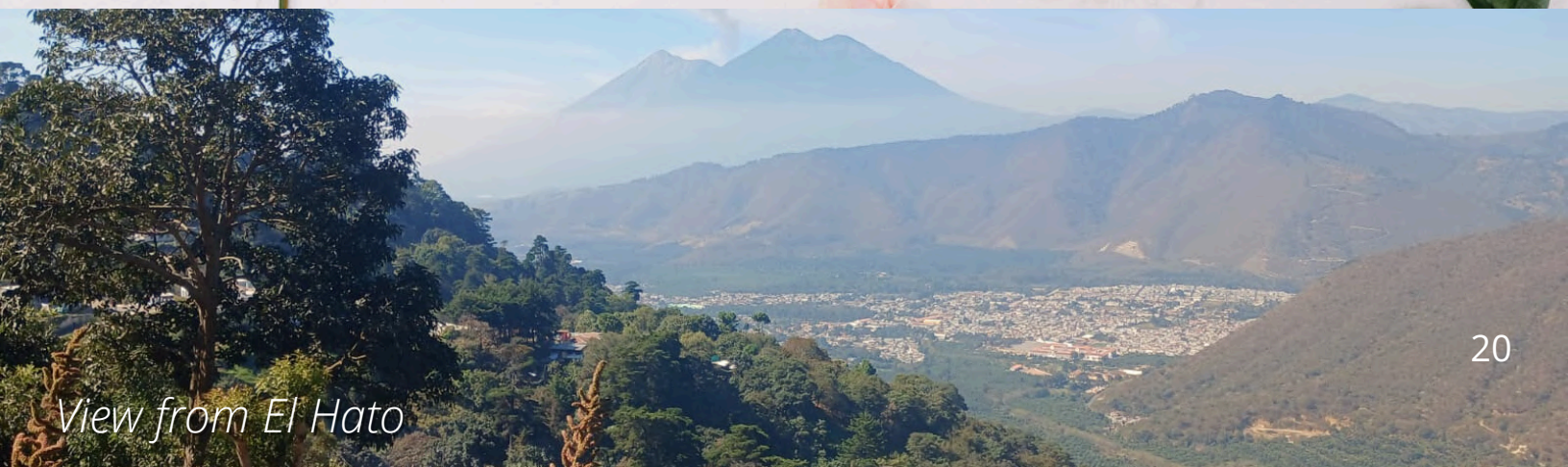


*Continued from previous page*

What inspired me to donate was seeing the incredible work you are doing in El Hato—a small but mighty organization making a real difference. Visiting the projects in person and witnessing firsthand how you support the community left a deep impression on me. I admire how you create opportunities for children to learn and grow while also addressing nutrition and food security through your garden initiatives. I know from my work in Santa Avelina how critical nutrition is for children's development, and I'm excited to see you combining education and healthy food in such a meaningful way.

The work you do in the new center at El Hato Literacy Center really resonates with me. As a former teacher, education has always been close to my heart. I truly believe that supporting education is essential for the future of the Mayan people. I'm also excited to see that you have introduced computers and technology.

When I talk to others about TWCG, I always encourage them to visit your website to see the photos and videos that bring your work to life. I highlight how close El Hato is to Antigua—a place that draws many visitors—and how, with a bit of support, children from El Hato could have access to opportunities beyond what might be imaginable now. You are in a unique position to close that circle of empowerment in El Hato"



*View from El Hato*



# Volunteering



"I enjoyed volunteering at Juntos Podemos because I love helping, meeting local people, and sharing new experiences, and I believe their work in El Hato is very important as they provide great support to families, especially children, through daily educational assistance"

- *Clémentine Gourvennec* -



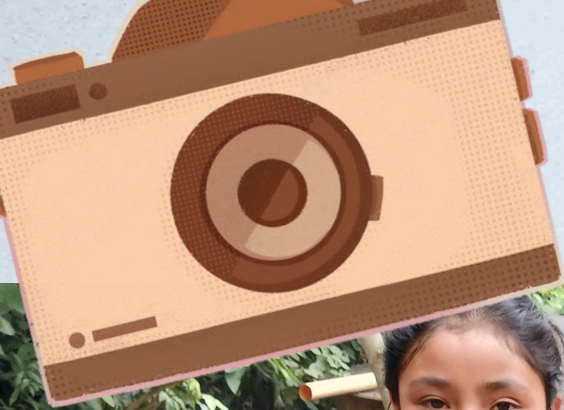
"In my opinion, the work of Asociación Juntos Podemos in El Hato is crucial for the development of children, offering both academic support and a second home. During my time in El Hato, I was impressed by how they taught not only math and language, but also values like friendship and generosity"

- *Clara Burgos Ponciano* -

"Volunteering was a fantastic experience, allowing me to support a resilient and creative young community eager to learn. It was an honor to share with the children, who taught us to stay strong in tough times and appreciate every opportunity"

- *Thomas Burgos Ponciano* -





# GALLERY



Community days



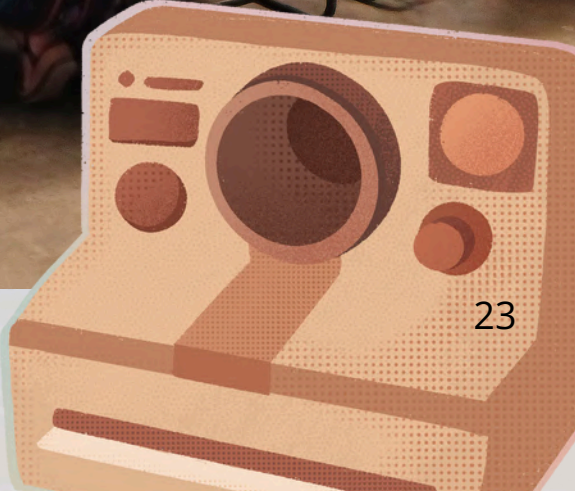
Tutoring program



● *Vacation camp*



● *Computer lab*







Humane education



School garden



What's the most important support we get? Yours! That's right, you are the driving force behind everything we do, and we couldn't be more grateful. Your belief in our work, your trust in our mission, and your unwavering support are what make all the difference.

To each one of you, our financial supporters, partners, and sponsors, you are crucial to making our impact possible. Without you, none of this would be achievable. Your commitment fuels the growth of the El Hato Literacy Center, the Garden of Hope, and all we stand for.

And let's not forget every donor, whether you've been with us for years or have just joined our journey. You are the heart of this movement, and we are so fortunate to have you on our team. Thank you for your dedication and for helping us continue this incredible work. You are, without a doubt, awesome!



Escuela Oficial Rural  
Mixta José Ignacio  
Ortiz Vides





$$\begin{array}{r} 75 \\ - 55 \\ \hline 20 \end{array}$$



[www.togetherwecanguatemala.org](http://www.togetherwecanguatemala.org)  
[www.juntospodemos.gt](http://www.juntospodemos.gt)



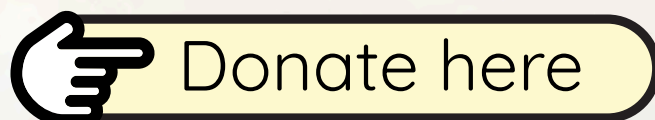
[info@togetherwecanguatemala.org](mailto:info@togetherwecanguatemala.org)



/togetherwecanguat  
 /gardenofhopegt



/gardenofhope  
 /togetherwecanguatemala



Aldea El Hato  
 La Antigua Guatemala  
 Sacatepéquez  
 GUATEMALA

